

# SPARE PARTS SECTION

## TUBE AND PIPE NOTCHER

### Model. PNM-3

Order Code P094

EDITION No : PNM-3-1  
DATE OF ISSUE : 06/2023

The following section covers the spare parts diagrams and lists that were current at the time this manual was originally printed. Due to continuous improvements of the machine, changes may be made at any time without notification.

#### HOW TO ORDER SPARE PARTS

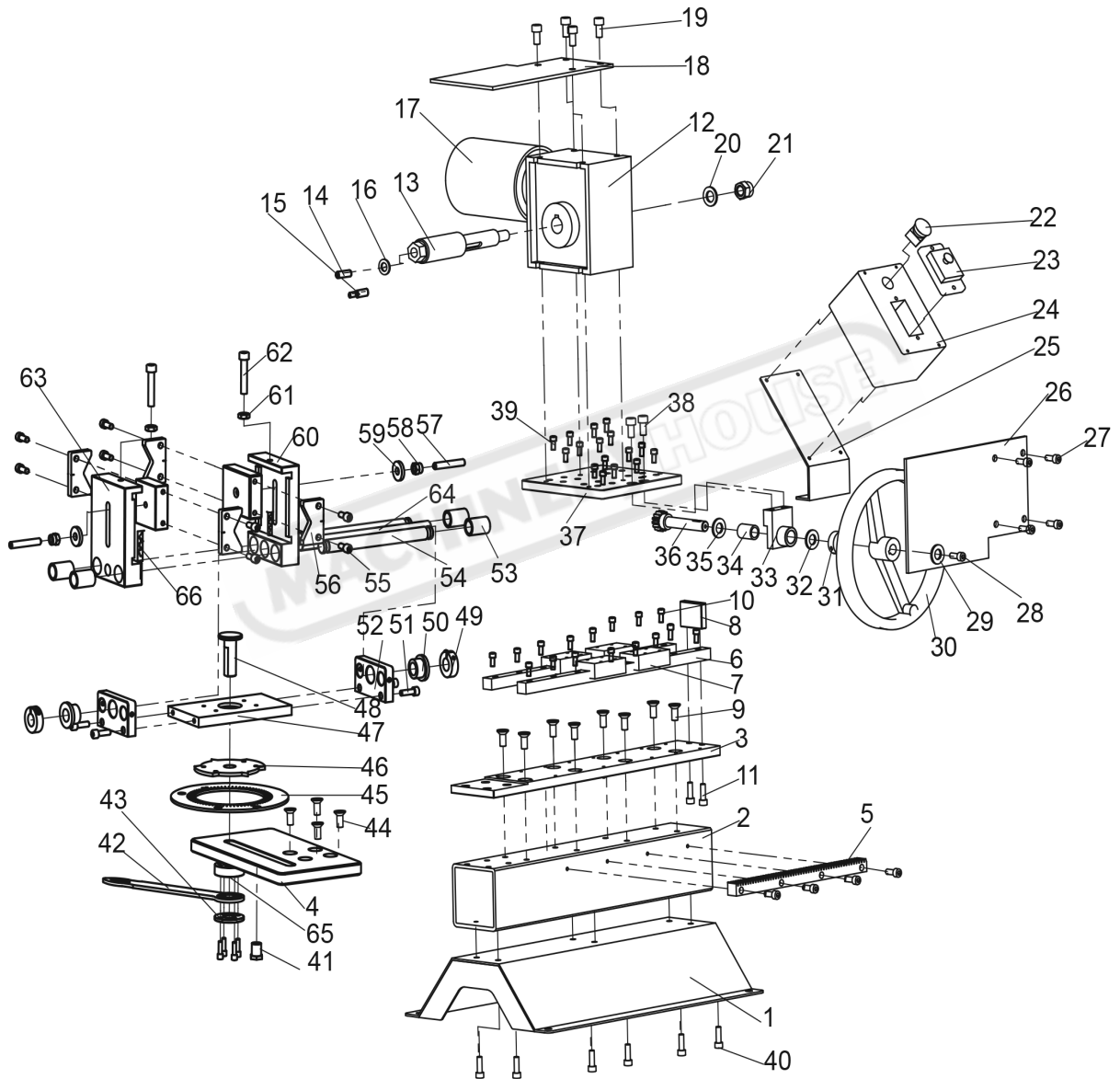
1. Have your machines model number, serial number & date of manufacture on hand, these can be found on the specification plate mounted on the machine
2. A scanned copy of your parts list/diagram with required spare part/s identified
3. Go to [www.machineryhouse.com.au/contactus](http://www.machineryhouse.com.au/contactus) and fill out the enquiry form attaching a copy of scanned parts list.



## WARNING

*The machine is the sole responsibility of the owner for its safe use. This responsibility includes but is not limited to proper installation in a safe environment, personnel training, proper inspection and maintenance, manual availability and comprehension. The manufacturer will not be held liable for injury or property damage from negligence, improper training, machine modifications or misuse.*

**SPARE PARTS DIAGRAM**



**SPARE PARTS LIST**

Item	DESCRIPTION	Qty	Item	DESCRIPTION	Qty
1	Stand	1	34	Sleeve Bushing	1
2	Main Tube	1	35	Washer	1
3	Track Mount	1	36	Gear	1
4	Slide Plate	1	37	Motor Base	1
5	Gear Rack	1	38	Screw	2
6	Linear Guide rail	2	39	Screw	16
7	Slide Block	4	40	Screw	6
8	Stop Block	1	41	Lock Screw	1
9	Screw	8	42	Lock Lever	1
10	Screw	16	43	Lock Cap	1
11	Screw	2	44	Screw	4
12	Gearbox	1	45	Degree Dial	1
13	Saw Arbor	1	46	Pointer Disc	1
14	Adapter,Standard 5/8-18	1	47	Vice Base	1
15	Adapter,Reducer 5/8-18 to 1/2-20	1	48	Vice Lock Stud	1
16	Washer	1	49	Collar	2
17	Motor	1	50	Flanged Sleeve Bushing	2
18	Lexan Guard	1	51	Screw	4
19	Screw	4	52	Vice Shaft Support	2
20	Washer	1	53	Sleeve Bushing	4
21	Nut	1	54	Vice Slide Shaft	2
22	Emergency Stop	1	55	Screw	8
23	Power Switch	1	56	Vice Jaw	4
24	Control Box	1	57	Screw	2
25	Switch Base	1	58	Nut	2
26	Lexan Guard	1	59	Washer	2
27	Screw	4	60	Vice Slide Block (L.H.)	1
28	Screw	1	61	Nut	2
29	Washer	1	62	Screw	2
30	Handwheel	1	63	Vice Slide Block (R.H.)	1
31	Collar	1	64	Double Vise Screw	1
32	Washer	1	65	Vice Lock Nut	1
33	Shaft Mount	1	66	Spring	2

**NOTE: SOME INDIVIDUAL PARTS MAY ONLY BE AVAILABLE AS AN ASSEMBLY**